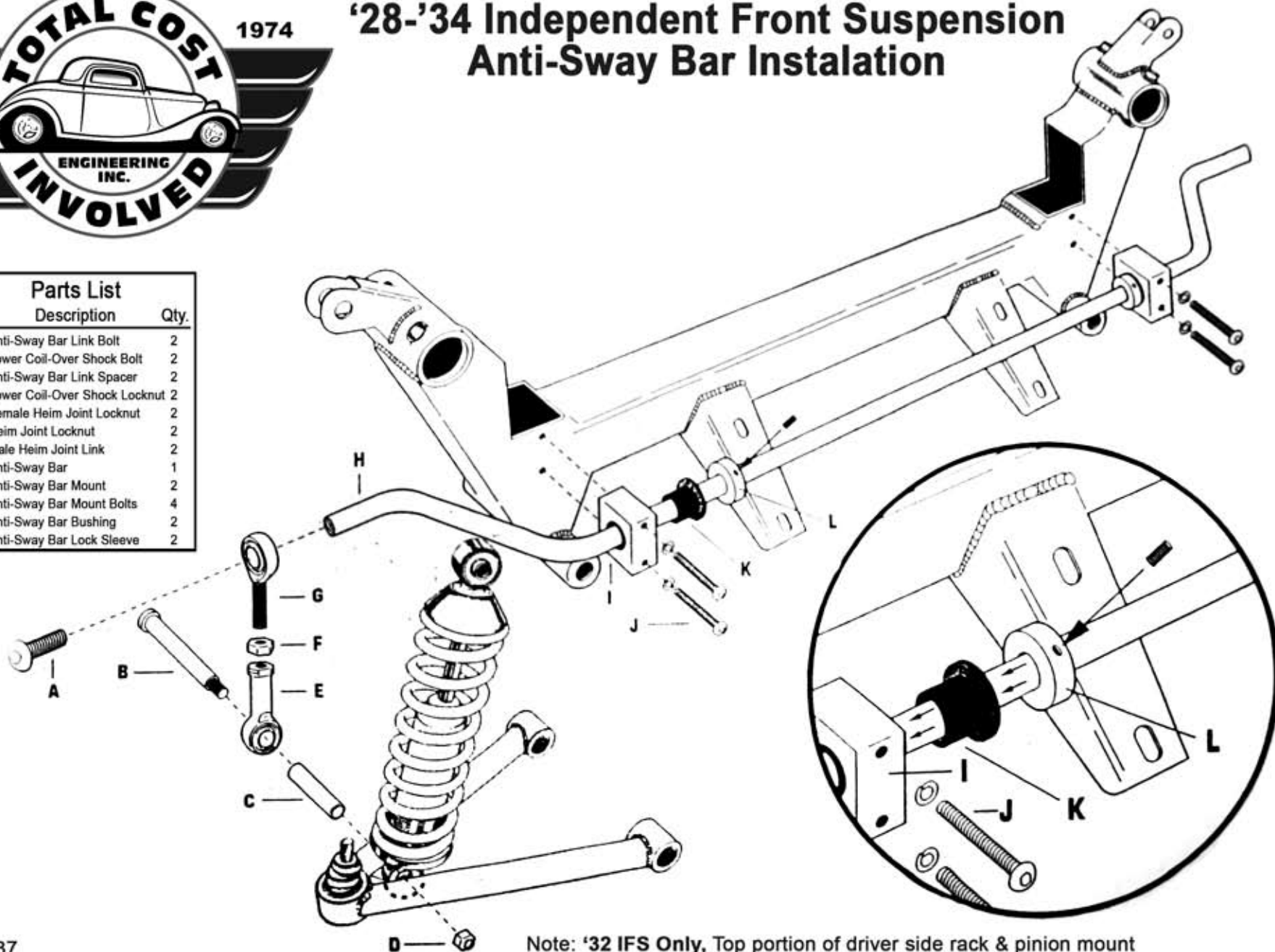




'28-'34 Independent Front Suspension Anti-Sway Bar Instalation

Parts List		
No.	Description	Qty.
A	Anti-Sway Bar Link Bolt	2
B	Lower Coil-Over Shock Bolt	2
C	Anti-Sway Bar Link Spacer	2
D	Lower Coil-Over Shock Locknut	2
E	Female Heim Joint Locknut	2
F	Heim Joint Locknut	2
G	Male Heim Joint Link	2
H	Anti-Sway Bar	1
I	Anti-Sway Bar Mount	2
J	Anti-Sway Bar Mount Bolts	4
K	Anti-Sway Bar Bushing	2
L	Anti-Sway Bar Lock Sleeve	2



Part# TCIE237

Note: '32 IFS Only, Top portion of driver side rack & pinion mount needs to be slightly trimmed for Anti-Sway Bar clearance.