

#6364WBK-P13F - Caliper Bracket Instructions for 1963-64 Ford Galaxie 13" Big Brake Kits

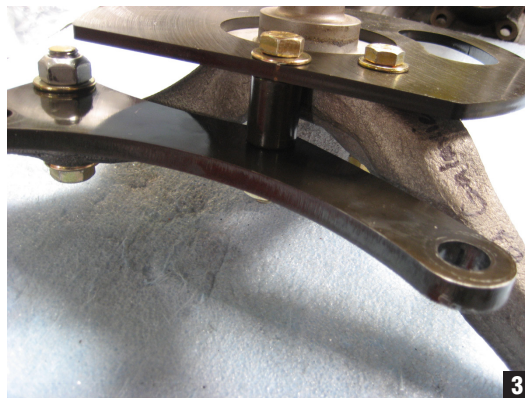
Instructions:



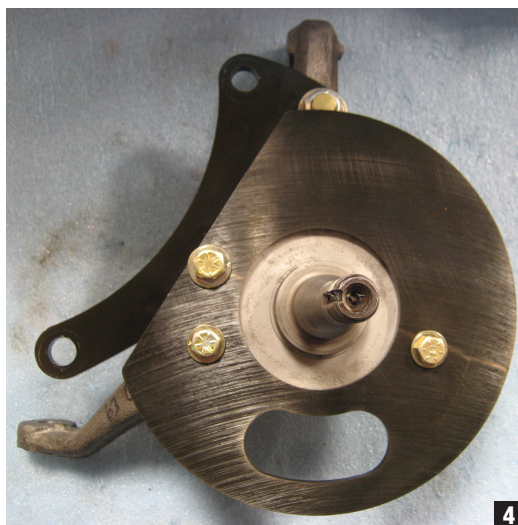
1. Remove the factory drum brake assembly from the spindle. This would be a good time to clean and inspect up factory spindles. (Fig. 1)



2. Install the backing plate using the two lower mounting holes on the spindle with the supplied hardware. *Note: Brackets will fit either side.* (Fig. 2)



3. Install the caliper bracket to the top hole on the spindle and the hole on the backing plate with the supplied spacer and hardware. (Fig. 3)



4. The spindle is now ready for the bearings and aluminum hub. (Fig. 4)

PLEASE NOTE: The installer needs to make sure that nothing can make contact with a brake hose, caliper, or other brake component at any point through the entire range of steering and suspension movement. The installer also needs make sure none of the steering or braking components can become bound or jammed at any time through the range of suspension or steering movement.

© Classic Performance Products, Inc. 2015
All rights reserved. This document may not be reproduced without prior written permission of CPP.

GENERAL TORQUE SPECIFICATIONS:

1/4"	grade 5	10lb/ft	1/4"	grade 8	14lb/ft
5/16"	grade 5	19lb/ft	5/16"	grade 8	29lb/ft
3/8"	grade 5	33lb/ft	3/8"	grade 8	47lb/ft
7/16"	grade 5	54lb/ft	7/16"	grade 8	78lb/ft
1/2"	grade 5	78lb/ft	1/2"	grade 8	119lb/ft
9/16"	grade 5	114lb/ft	9/16"	grade 8	169lb/ft
5/8"	grade 5	154lb/ft	5/8"	grade 8	230lb/ft

NOTE: With 18" and larger wheels we recommend 1/2" wheel studs. The larger the wheel diameter, the greater the force is on the wheel studs. Please inquire about replacement wheel stud kits available from CPP.