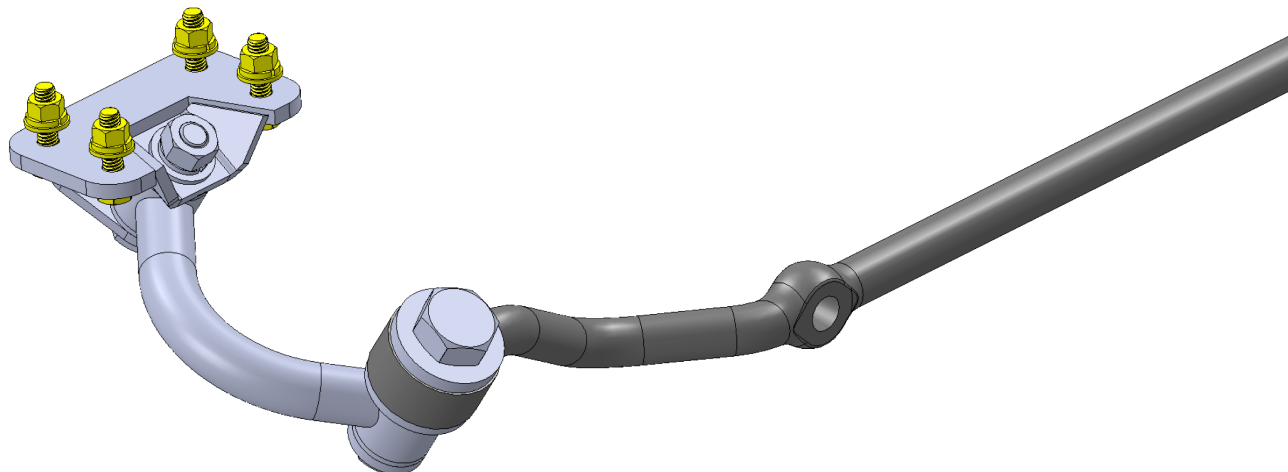
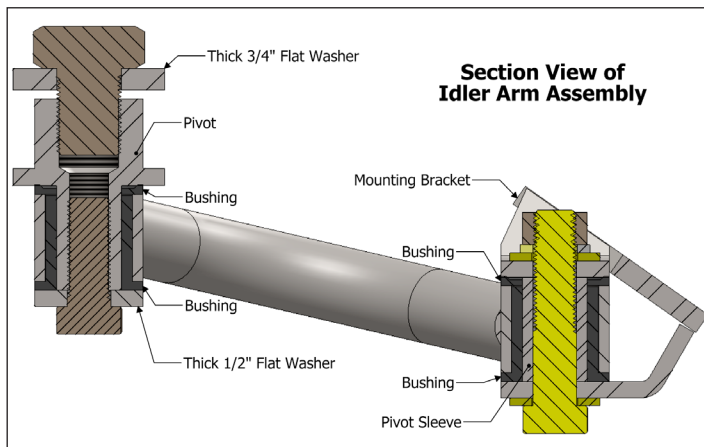


#63671A-UK Installation Instructions for 1963-67 Nova Deluxe Idler Arm



Instructions:

1. Remove the idler arm mounting bracket from the chassis.
2. Remove the idler arm bushing from the center link. This can be done easily by using an air hammer with a dull chisel or punch.
3. Using the new hardware, attach the new idler arm bracket to the chassis. Refer to the illustration as needed.
4. Install the longer bushings into the new idler arm.
5. Install the pivot sleeve inside the bushing idler arm assembly.
6. Install the shorter bushing (thrust washer) onto the pivot sleeve.
7. Install the idler arm assembly into the mounting bracket.
8. Using the 1/2" hardware bolt the idler arm assembly to the mounting bracket. The bottom of the bracket should have a flat washer and then the bolt head. The top of the bracket should have the lock washer and then the nut.
9. Assemble the other end of the idler arm. Use the remaining bushing (thrust washer), pivot, thick flat washer, and 1/2" bolt. The large 3/4" threaded portion of the pivot should be up. Be sure to use a thread locking compound like loctite on the 1/2" bolt. It may be necessary to wait until the 3/4" bolt is installed before you can tighten this bolt.
10. Attach the center link to the idler arm. The large end of the idler arm pivot should go thru the large end of the center link. The center link should be thicker than the pivot. Use the thick 3/4" flat washer, and 3/4" bolt. Be sure to use a thread locking compound like loctite on the bolt. Tighten the pivot onto the center link.
11. Double check that all of the nuts and bolts are tightened.



© Classic Performance Products, Inc. 2013
All rights reserved. This document may not be reproduced
without prior written permission of CPP.

GENERAL TORQUE SPECIFICATIONS:

1/4"	grade 5	10lb/ft	1/4"	grade 8	14lb/ft
5/16"	grade 5	19lb/ft	5/16"	grade 8	29lb/ft
3/8"	grade 5	33lb/ft	3/8"	grade 8	47lb/ft
7/16"	grade 5	54lb/ft	7/16"	grade 8	78lb/ft
1/2"	grade 5	78lb/ft	1/2"	grade 8	119lb/ft
9/16"	grade 5	114lb/ft	9/16"	grade 8	169lb/ft
5/8"	grade 5	154lb/ft	5/8"	grade 8	230lb/ft