

#6372SHK-RE - Installation Instructions

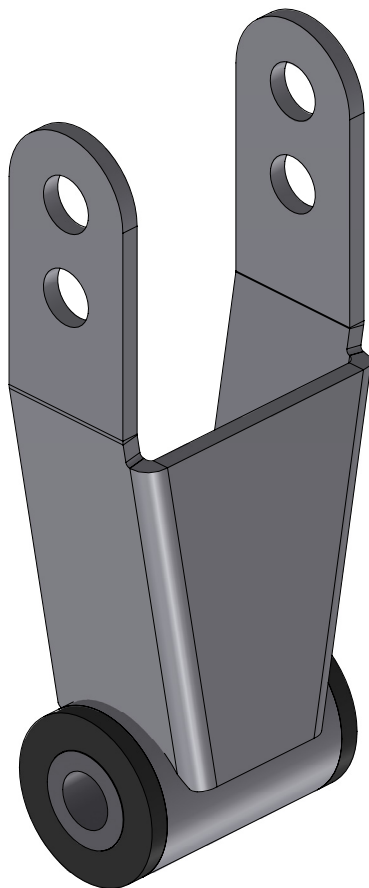
for 2" Extended Shackle Kits for 1963-72 Leaf Spring Equipped GM Half-Ton Pickups

Notes:

CPP Shackles replace factory leaf spring shackles and will lower rearend 1". Replace spring pivot bushings if they show any signs of severe wear.

Instructions:

1. Chock front wheels to prevent truck from rolling once rear end has been raised.
2. Elevate rear of truck with a floor jack, enough to unload leaf springs; support frame forward of the springs with jack stands.
3. Place jack under third member of rear end.
4. Remove both shocks.
5. With rear end raised, release rear of leaf spring by removing it from the stock shackle; unbolt and remove shackle from the frame.
6. Replace any worn bushings, if necessary.
7. Install new CPP extended shackles onto the frame (same orientation as stock ones).
8. Raise rear end on floor jack to install leaf spring into new shackle. Use hole further from the shackle pivot bushing for maximum drop; closest for less drop.
9. Re-install shocks.
10. Remove jack stands, lower vehicle down on floor jack, and remove wheel chocks.
11. Verify adequate suspension/chassis clearance before driving vehicle.



GENERAL TORQUE SPECIFICATIONS:

1/4"	grade 5	10lb/ft	1/4"	grade 8	14lb/ft
5/16"	grade 5	19lb/ft	5/16"	grade 8	29lb/ft
3/8"	grade 5	33lb/ft	3/8"	grade 8	47lb/ft
7/16"	grade 5	54lb/ft	7/16"	grade 8	78lb/ft
1/2"	grade 5	78lb/ft	1/2"	grade 8	119lb/ft
9/16"	grade 5	114lb/ft	9/16"	grade 8	169lb/ft
5/8"	grade 5	154lb/ft	5/8"	grade 8	230lb/ft

NOTE: With 18" and larger wheels we recommend 1/2" wheel studs. The larger the wheel diameter, the greater the force is on the wheel studs. Please inquire about replacement wheel stud kits available from CPP.

© Classic Performance Products, Inc. 2015
All rights reserved. This document may not be reproduced without prior written permission of CPP.