

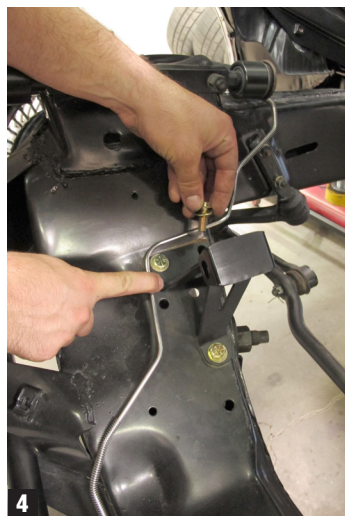
#6570MP-LS - Installation Instructions

for 1965-70 Chevy Fullsize Car LS Series Conversion Engine Mount Pedestals

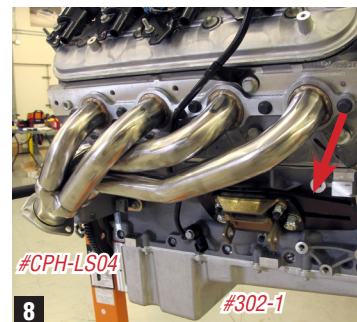
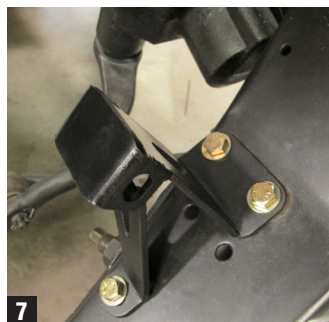


Notes:

No drilling is required; pedestals use factory mounting holes. CPP's pedestal kit is designed to work with the FitRite™ LS swap engine mount plates (#LS1-KU-P / #LS1-KULAC-P) as well as standard SBC engine mounts.



4. Securely tighten all pedestal mount hardware. Replace and/or install drivetrain. (photo 7)



5. If using CPP's FitRite™ engine mounts, install mount kit onto engine first, leaving urethane mounts semi-loose on adapter plates for drive-train adjustability and placement (see accompanying instructions for mounts).

6. On later LSX blocks, clearance must be made for the right-side threaded freeze plug (in front of forward cast engine mount hole) by grinding off small portion of FitRite carriage bolt head closest to front of engine. (photo 8)

7. CPP offers complete kits for LS swaps, including oil pans (Mast Motorsports #401-11 or Holley #302-1), stainless tight-clearance headers (#CPH-LS04), and adjustable transmission crossmembers (#CP90241), making your job that much easier!

Instructions:

1. With engine/trans safely removed from vehicle, thoroughly clean front crossmember; remove existing factory engine mount pedestals.
2. Using the same mounting points, install CPP pedestals. (photos 3 & 4)
3. To aid in installing the nut from inside the crossmember, try using low-adhesive (blue) masking tape around your deep socket to hold the washers in place. (photos 5 & 6)

GENERAL TORQUE SPECIFICATIONS:					
1/4"	grade 5	10lb/ft	1/4"	grade 8	14lb/ft
5/16"	grade 5	19lb/ft	5/16"	grade 8	29lb/ft
3/8"	grade 5	33lb/ft	3/8"	grade 8	47lb/ft
7/16"	grade 5	54lb/ft	7/16"	grade 8	78lb/ft
1/2"	grade 5	78lb/ft	1/2"	grade 8	119lb/ft
9/16"	grade 5	114lb/ft	9/16"	grade 8	169lb/ft
5/8"	grade 5	154lb/ft	5/8"	grade 8	230lb/ft

NOTE: With 18" and larger wheels we recommend 1/2" wheel studs. The larger the wheel diameter, the greater the force is on the wheel studs. Please inquire about replacement wheel stud kits available from CPP.

© Classic Performance Products, Inc. 2014
All rights reserved. This document may not be reproduced without prior written permission of CPP.



For technical assistance, refer to our Brake & Steering Tech Guide, visit our website for installation instructions, or call and speak to one of our knowledgeable customer service reps.

Classic Performance Products, Inc. 714.522.2000 | fax 714.522.2500
378 E. Orangethorpe Ave. | Placentia, CA 92870 | www.classicperform.com