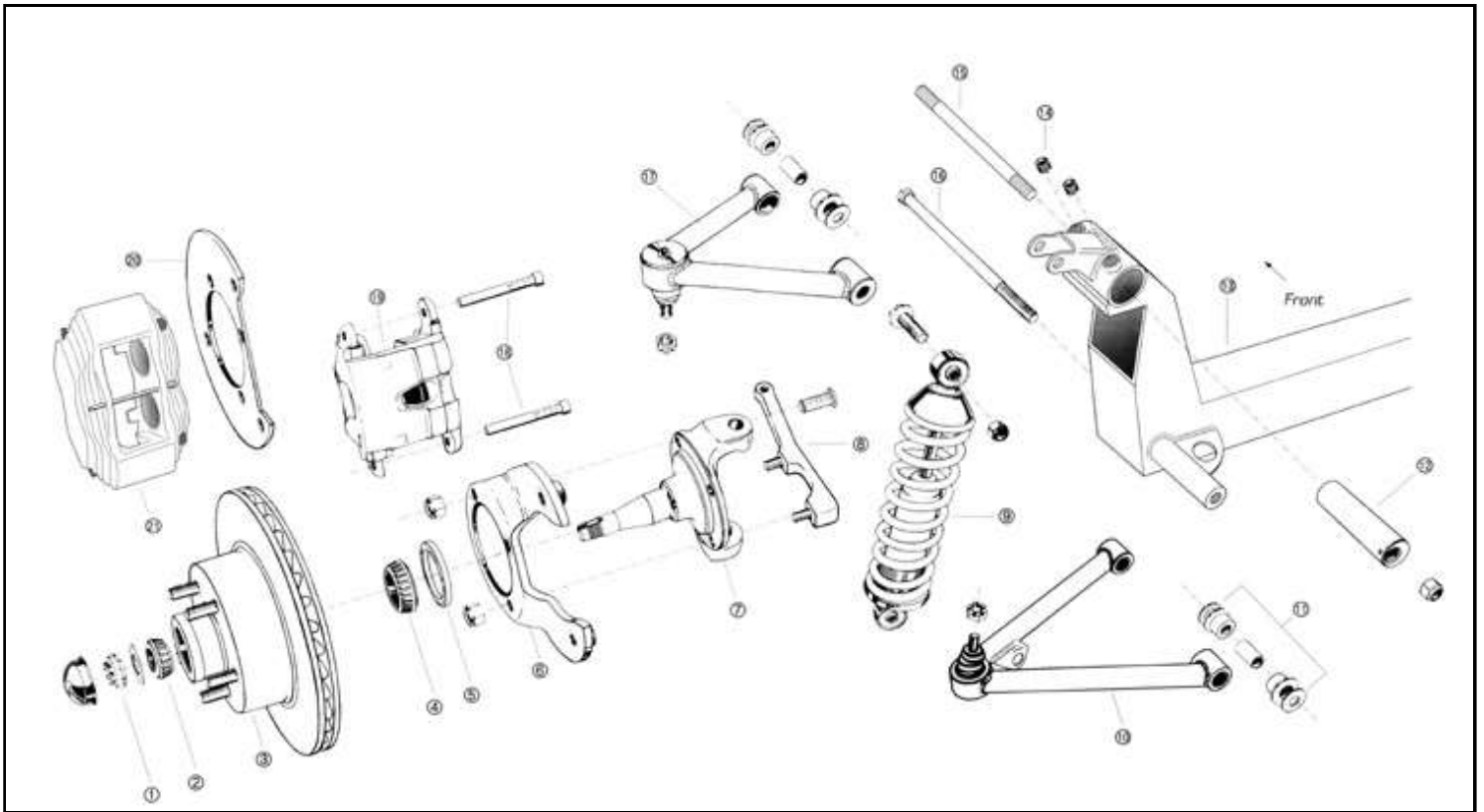




1953-'56 Ford Pickup & 1955-'59 Chevy Pickup

Independent Front Suspension

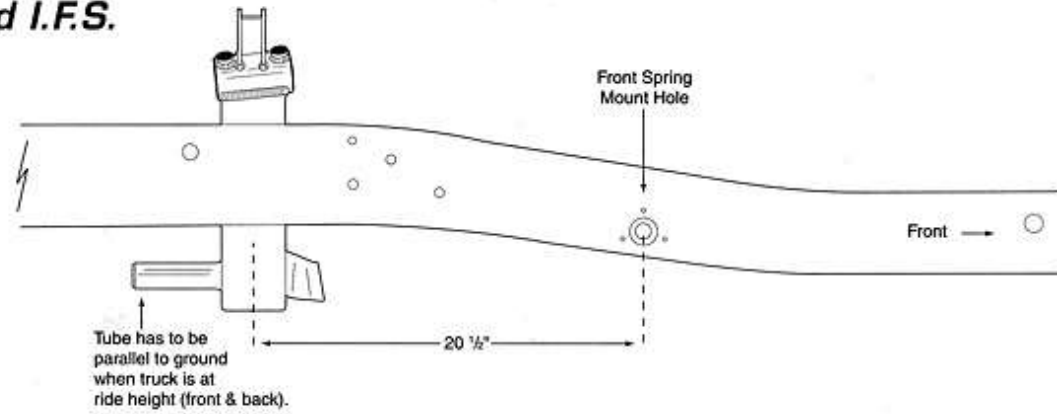


PARTS LIST

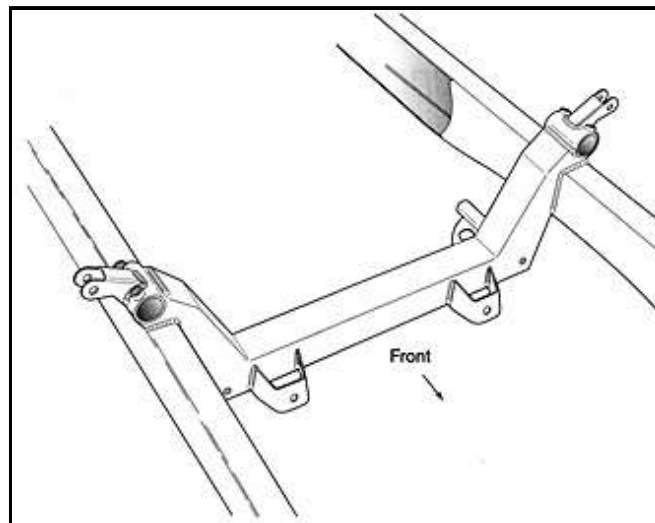
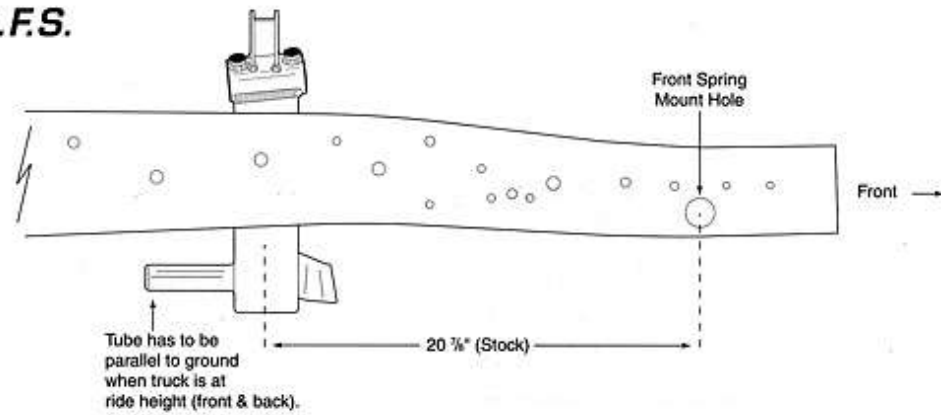
1. Spindle Nut	2	9. Coil Over Shocks	2	17. Upper Control Arms	2
2. Outer Wheel Bearing	2	10. Lower Control Arms	2	18. GM Caliper Bolt	4
3. Brake Rotor	2	11. Control Arm Bushing Set	8	19. GM Caliper	2
4. Inner Wheel Bearing	2	12. Eccentric Adjuster	2		
5. Grease Seat	2	13. Crossmember	1	(OPTIONAL)	
6. GM Caliper Bracket	2	14. Eccentric Look Screws	4	20. Aluminum Caliper Bracket	2
7. Spindle	2	15. Upper Control Arm Bolt	2	21. Aluminum Caliper	2
8. Steering Arm	2	16. Lower Control Arm Bolt	2		

Installing the Crossmember

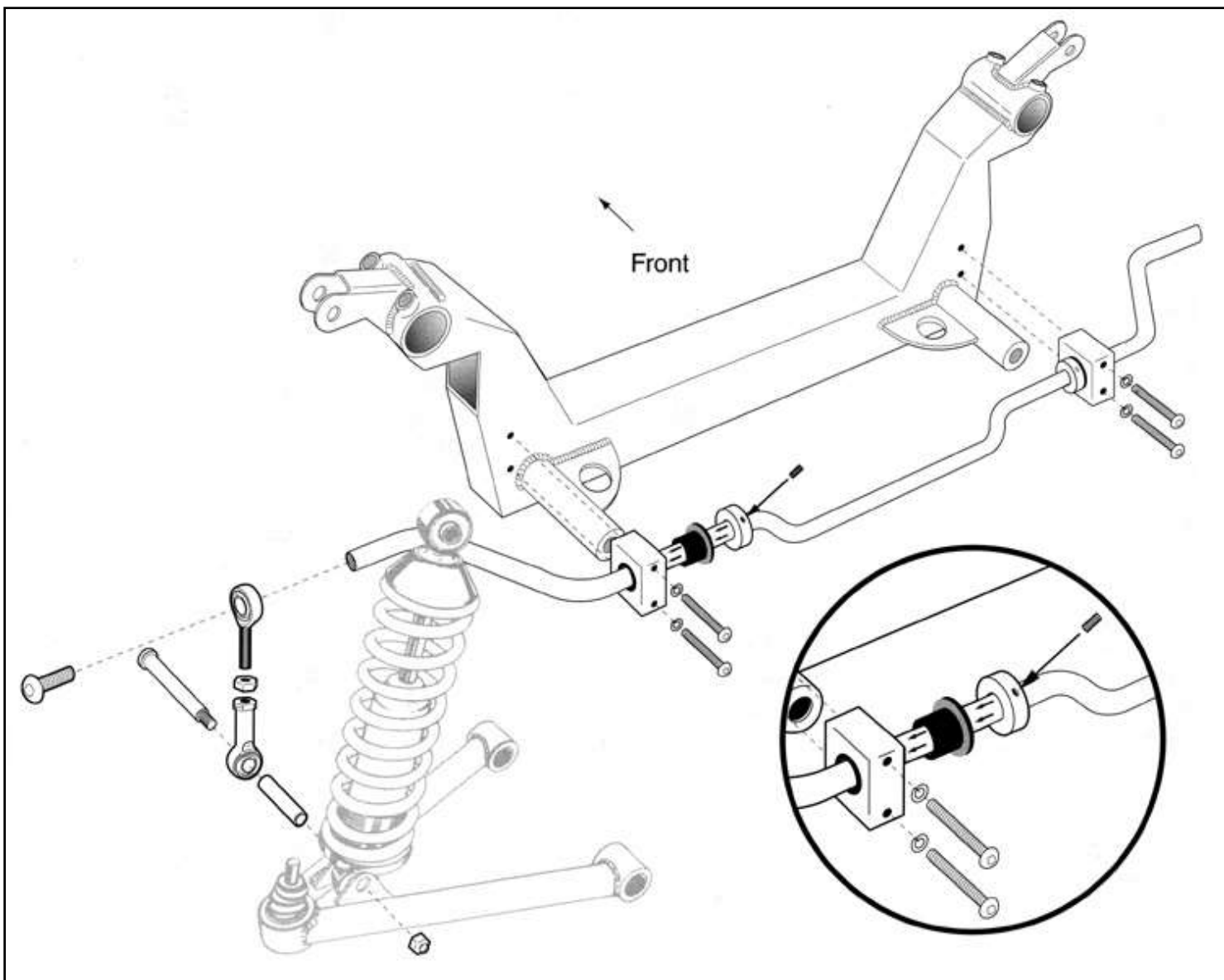
Ford I.F.S.



Chevy I.F.S.



Anti-Sway Bar Installation



© Classic Performance Products Inc.

This "website" and all contents are property of Classic Performance Products Inc. [Disclaimer](#)



[HOME](#) [ORDER](#) [TECH](#) [BOOKS](#) [STEERING](#) [BRAKES](#) [SUSPENSION](#) [POLICIES](#)