



CLASSIC PERFORMANCE PRODUCTS

[HOME](#)

[E-MAIL](#)

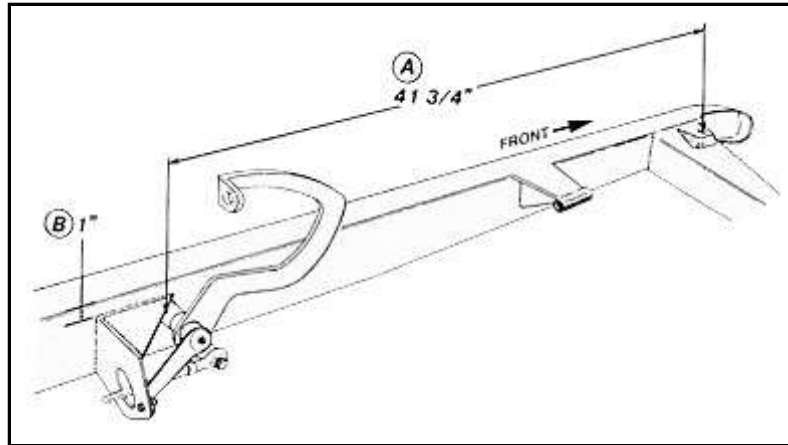
[TECH](#)

[BOOKS](#)

Classic Performance Products 175 East Freedom Avenue Anaheim, CA 92801

1928-48 Manual Brake Pedal Instructions

MODEL 'A' BRAKE PEDAL ASSEMBLY



The Model 'A' brake pedal-master cylinder assembly is positioned as follows:

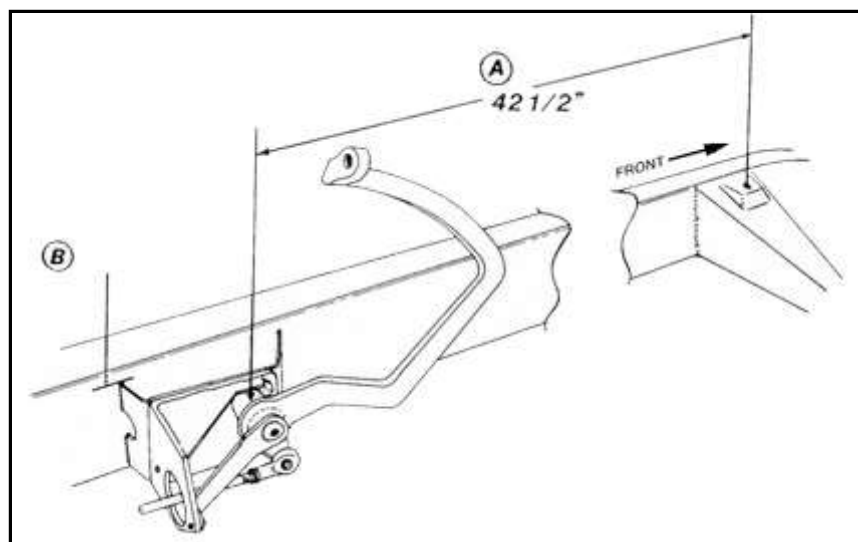
- A. The center of the pedal pivot is positioned 41 3/4" back from the center of the radiator mounting hole.
- B. The top of the master cylinder bracket is located 1" below the top of the frame.

All welding should be performed by a qualified welder.

PLEASE NOTE:

The above dimensions place the pedal assembly in the optimum position for use with our Model 'A' chassis and components. Minor changes may be required to find the best position on your chassis.

'32 FORD BRAKE PEDAL ASSEMBLY



The '32 Ford brake pedal assembly is positioned as follows:

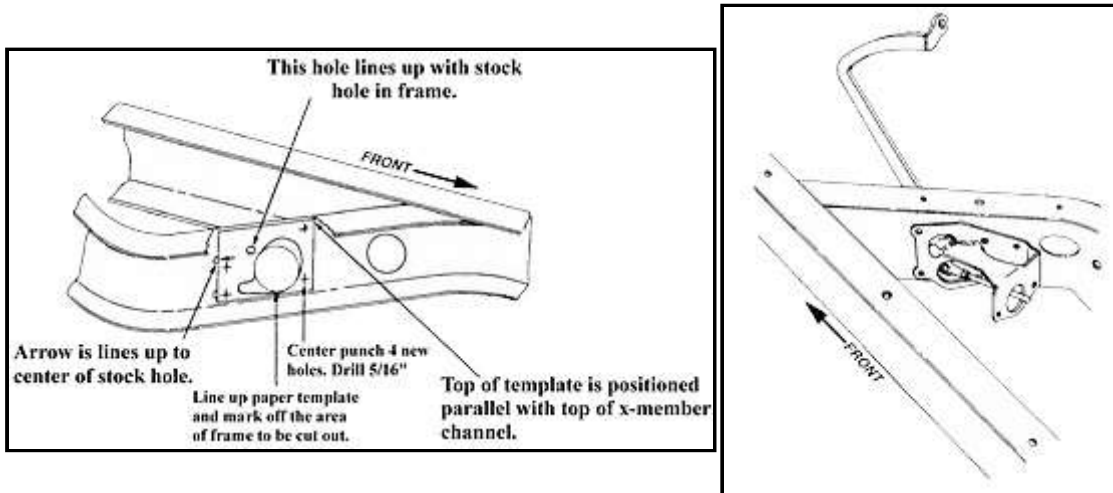
- A. The center of the pedal pivot is positioned 42-1/2" back from the center of the radiator mounting hole.
- B. The top of the mounting bracket is located parallel to and 1-1/2" below the top of the frame rail.

All welding should be performed by a qualified welder.

PLEASE NOTE:

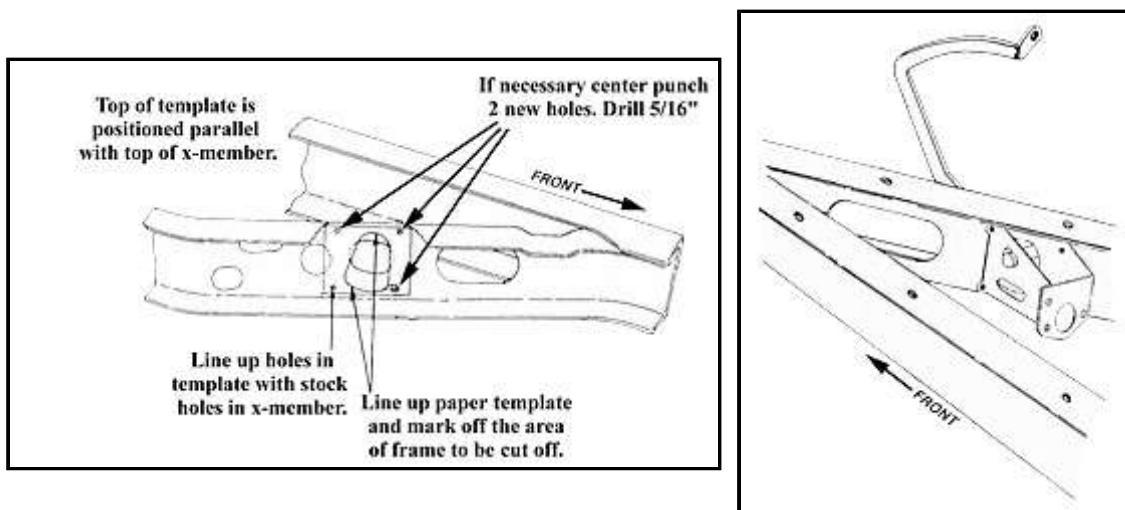
The above dimensions place the pedal assembly in the optimum position for use with our '32 chassis and components. Minor changes may be required to find the best position on your chassis.

'33-'34 FORD BRAKE PEDAL ASSEMBLY



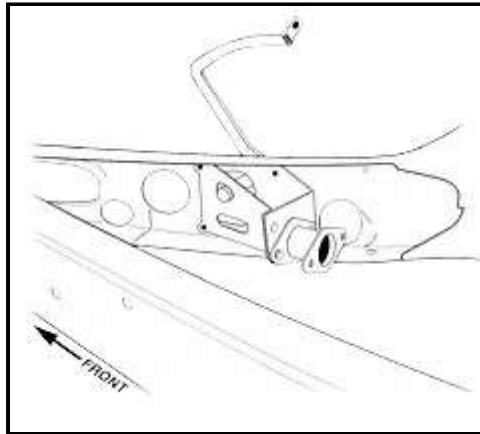
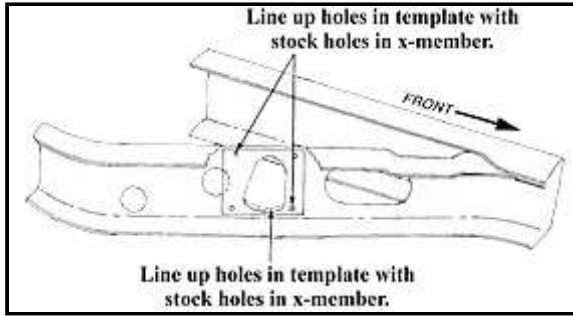
Mounting the '33-'34 Ford brake pedal assembly requires some minor cutting and redrilling. Using the template provided on the back of this sheet, and the instructions below, the pedal assembly is easily installed.

'35-'40 FORD BRAKE PEDAL ASSEMBLY



Mounting the '35-'40 Ford brake pedal assembly requires some minor cutting and redrilling. Using the template provided on the back of this sheet, and the instructions below, the pedal assembly is easily installed.

'42-'48 FORD BRAKE PEDAL ASSEMBLY



Mounting the '42-'48 Ford brake pedal assembly requires some minor cutting and redrilling. Using the template provided on the back of this sheet, and the instructions below, the pedal assembly is easily installed.

© Classic Performance Products Inc.

This "website" and all contents are property of Classic Performance Products Inc. [Disclaimer](#)



[HOME](#) [ORDER](#) [TECH](#) [BOOKS](#) [STEERING](#) [BRAKES](#) [SUSPENSION](#) [POLICIES](#)