



**CLASSIC PERFORMANCE PRODUCTS**

[HOME](#)

[E-MAIL](#)

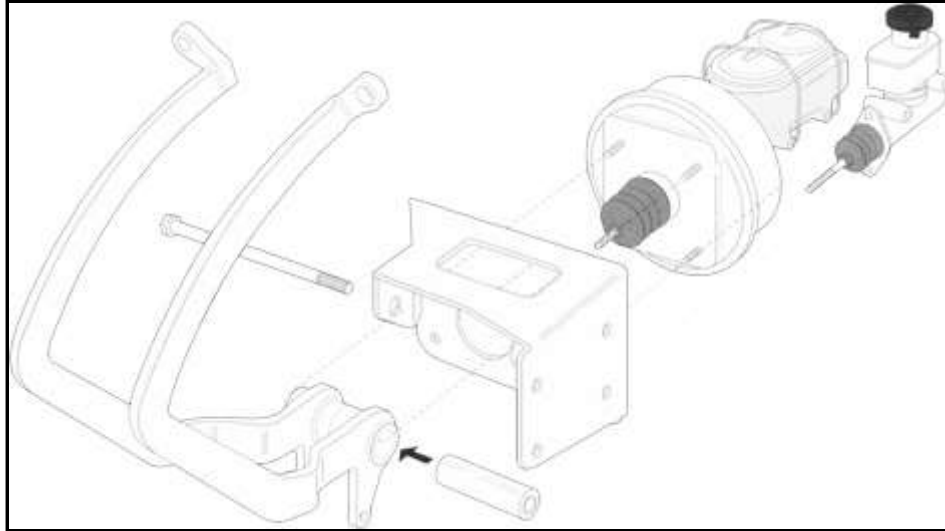
[TECH](#)

[BOOKS](#)

Classic Performance Products 175 East Freedom Avenue Anaheim, CA 92801

## POWER BRAKE & HYDRAULIC CLUTCH ASSEMBLY

---

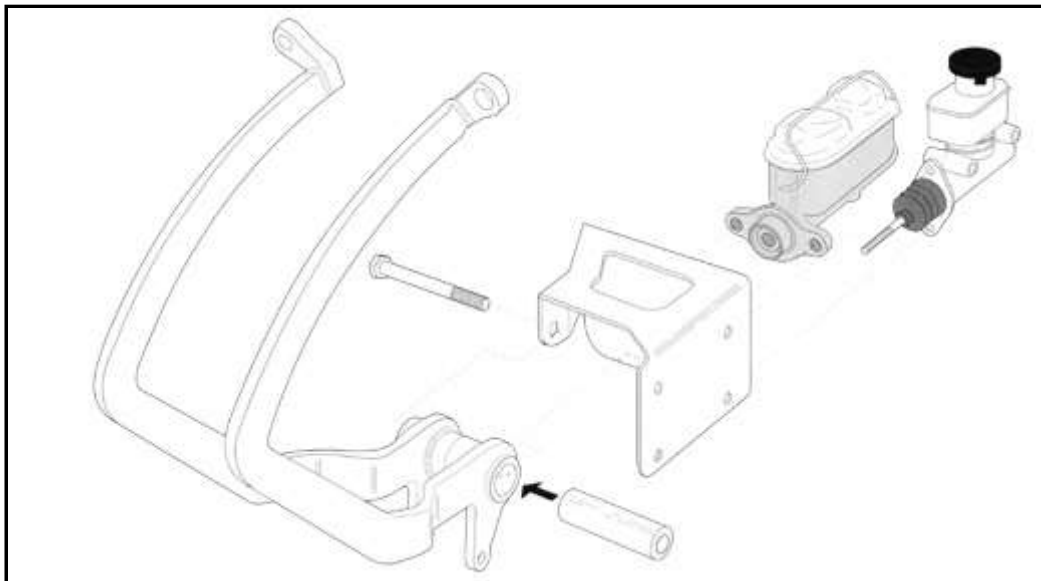


You can install this pedal assembly either by welding it to the frame or bolt in by all of the 4 bolts. Make sure that there is no clearance problems between the pedals and transmission, the frame center section and the master cylinder/booster before it is permanently welded. After the bracket is installed the master cylinder/booster assembly and the clutch master cylinder can be installed. We would recommend the -1/4" bore Wilwood or Tilton clutch master cylinder. The last step is to install the clutch master cylinder plastic fluid reservoir; make sure to slightly heat the bottom of the reservoir so it won't crack when expanded and make sure that the O-ring is still in its groove. Now you can bleed the brakes and the clutch.

---

## BRAKE & HYDRAULIC CLUTCH ASSEMBLY

---



© **Classic Performance Products Inc.**

This "website" and all contents are property of Classic Performance Products Inc. [Disclaimer](#)



[HOME](#) [ORDER](#) [TECH](#) [BOOKS](#) [STEERING](#) [BRAKES](#) [SUSPENSION](#) [POLICIES](#)